

Transmission mode

```
graph TD; A[Transmission mode] --> B[Simplex]; A --> C[Half-duplex]; A --> D[Full-duplex];
```

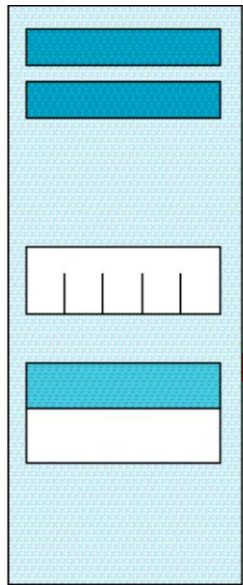
Simplex

Half-duplex

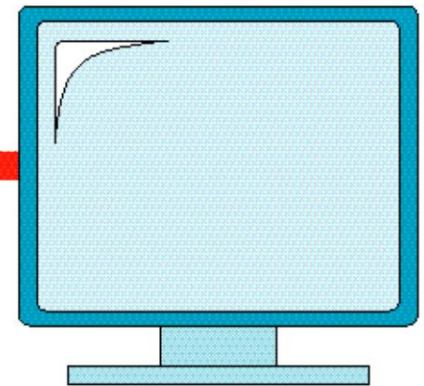
Full-duplex

Simplex

Direction
of data

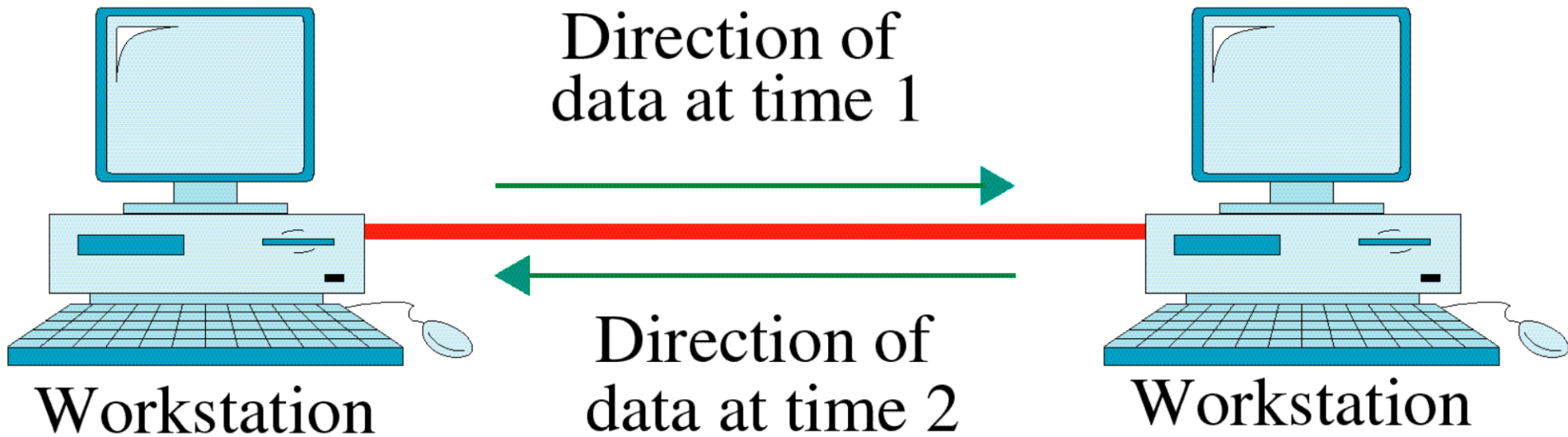


Mainframe

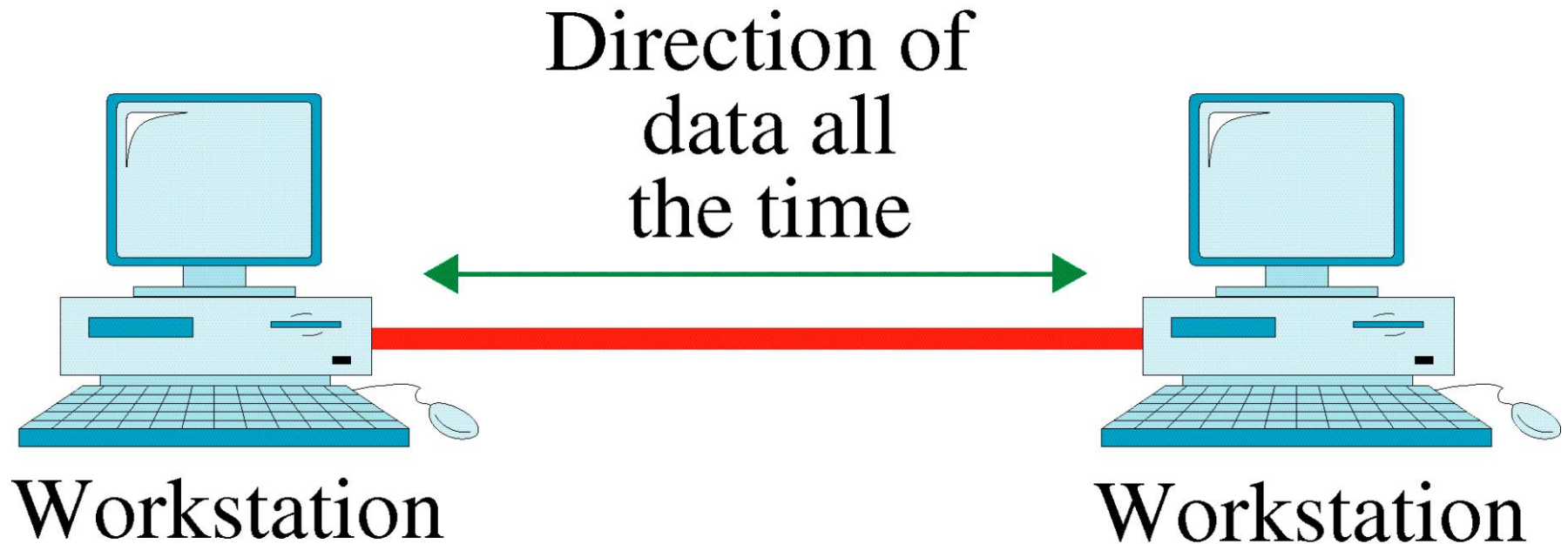


Monitor

Half-Duplex



Full-Duplex



Network

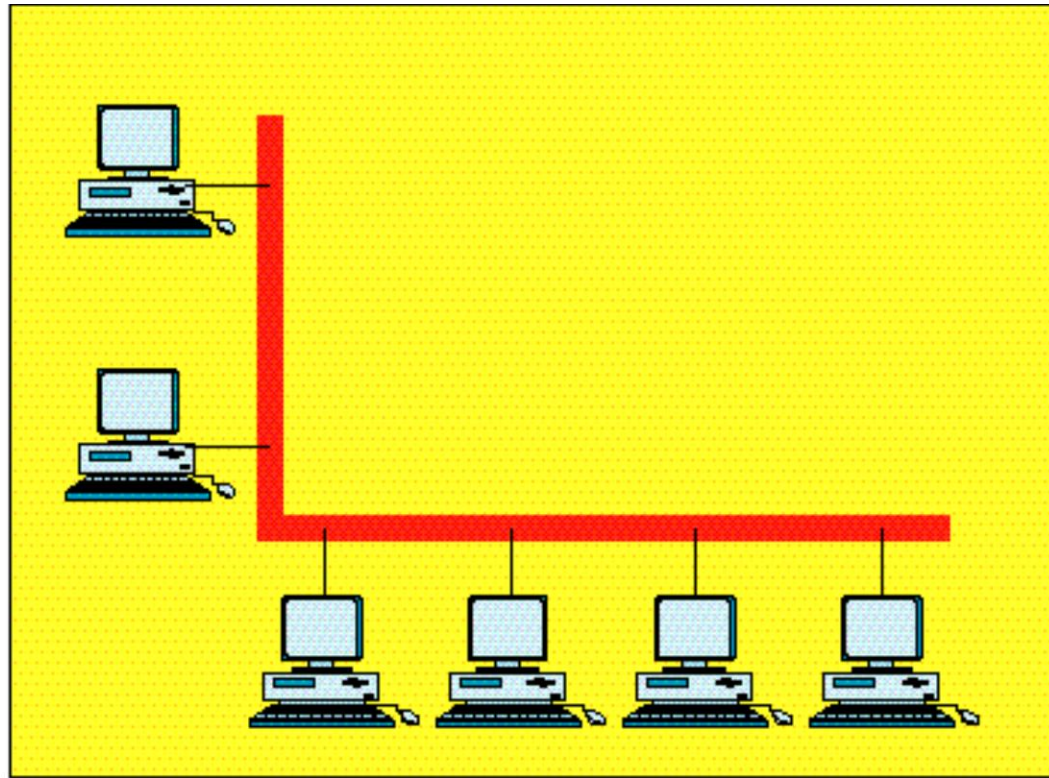
```
graph TD; Network[Network] --- LAN[Local area network (LAN)]; Network --- MAN[Metropolitan area network (MAN)]; Network --- WAN[Wide area network (WAN)];
```

Local area
network
(LAN)

Metropolitan area
network
(MAN)

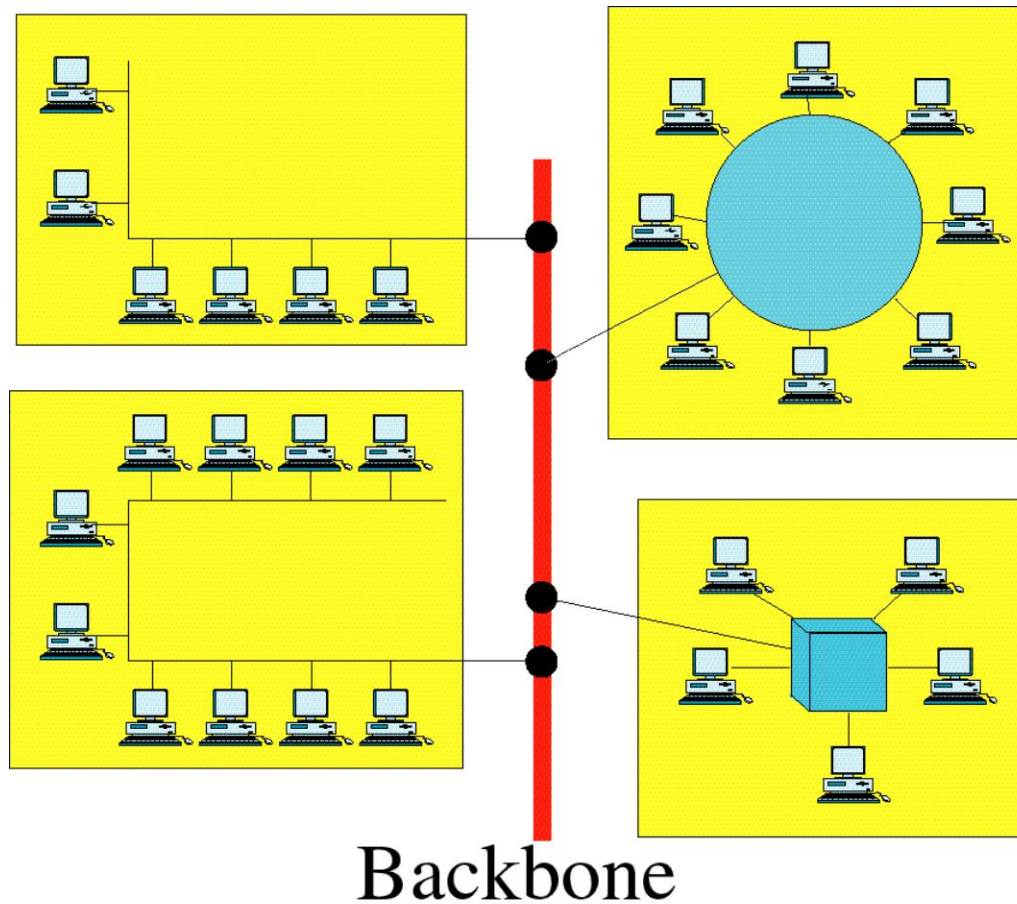
Wide area
network
(WAN)

Local Area Network



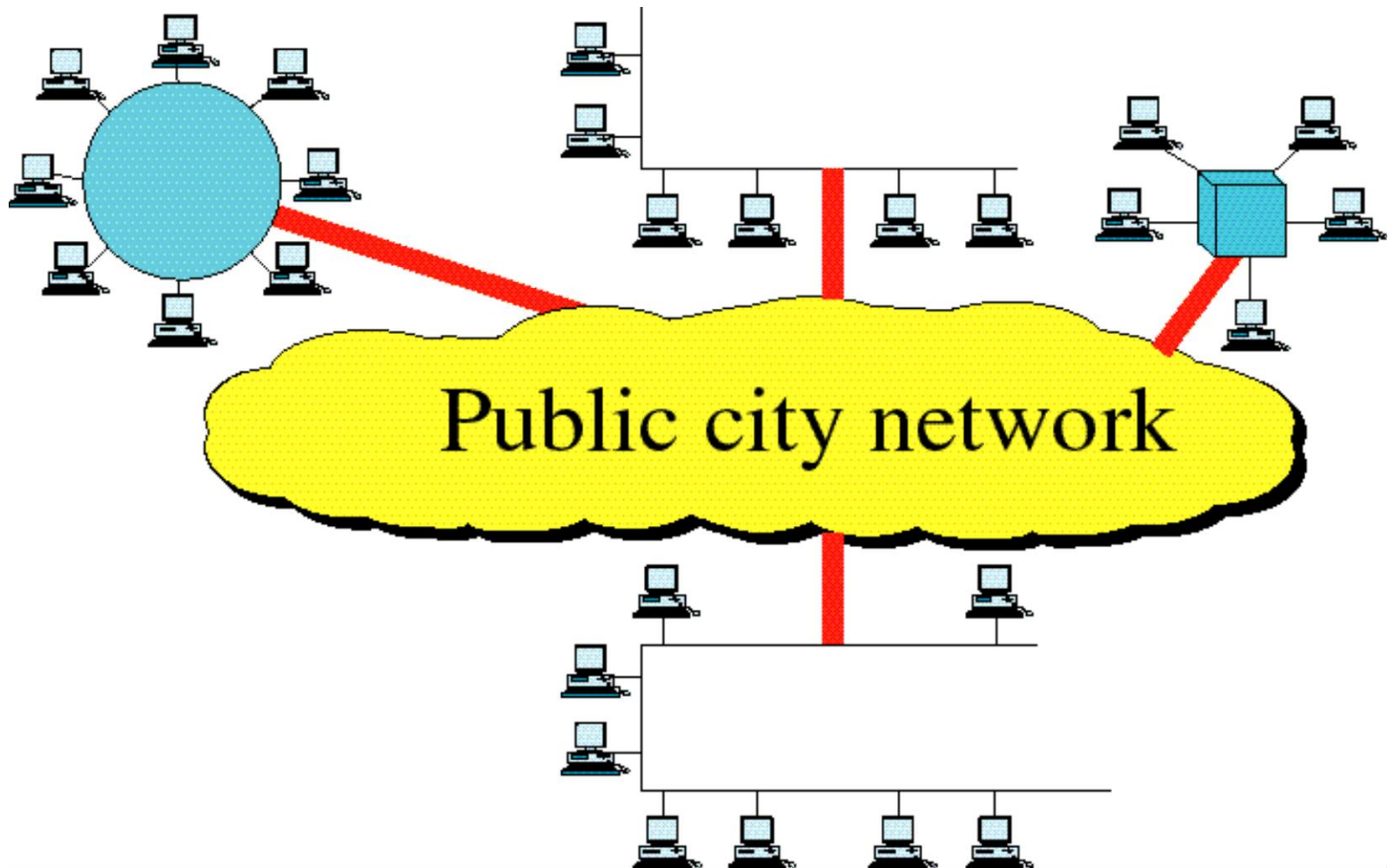
Single building LAN

Local Area Network

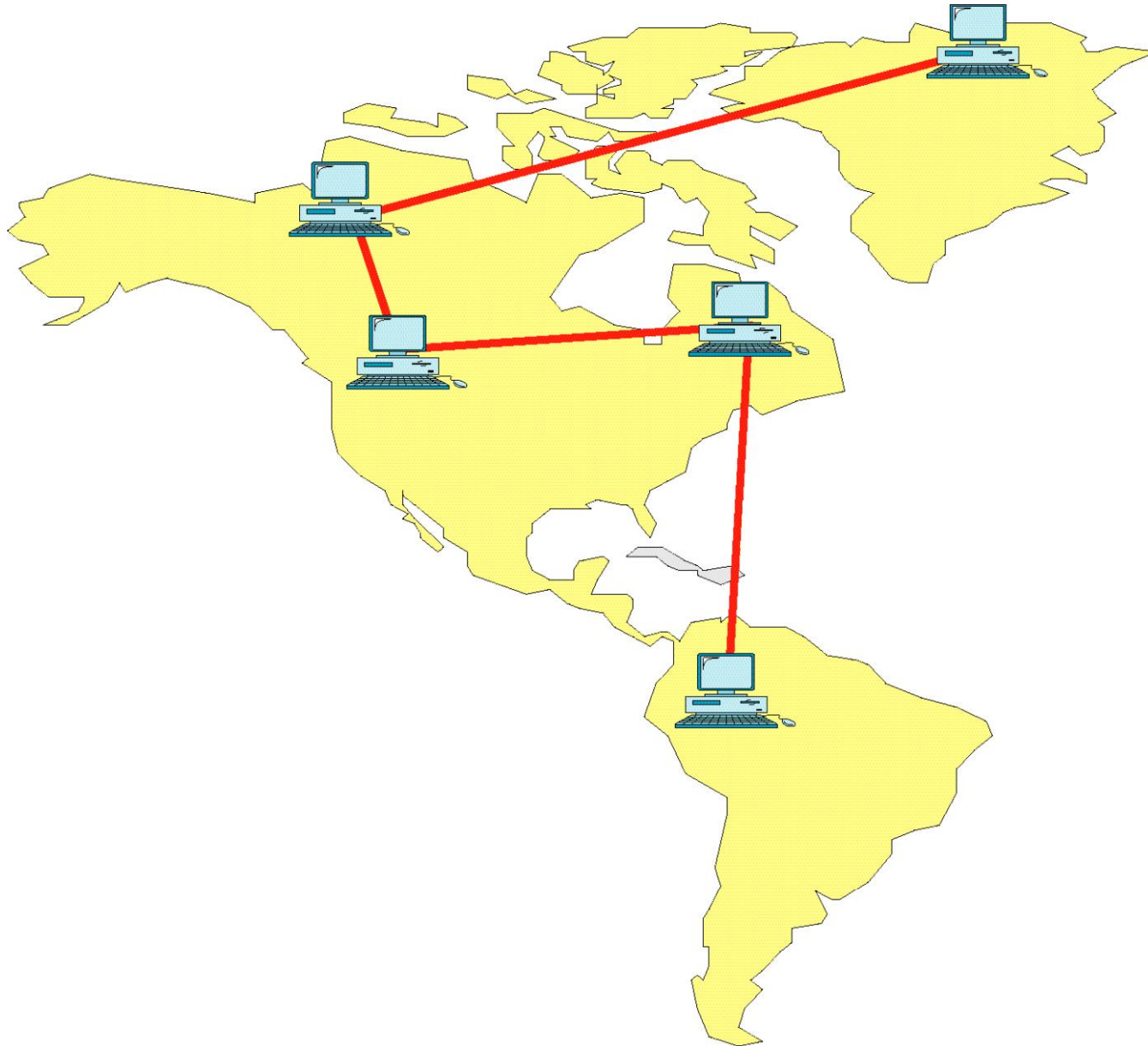


Multiple building LAN

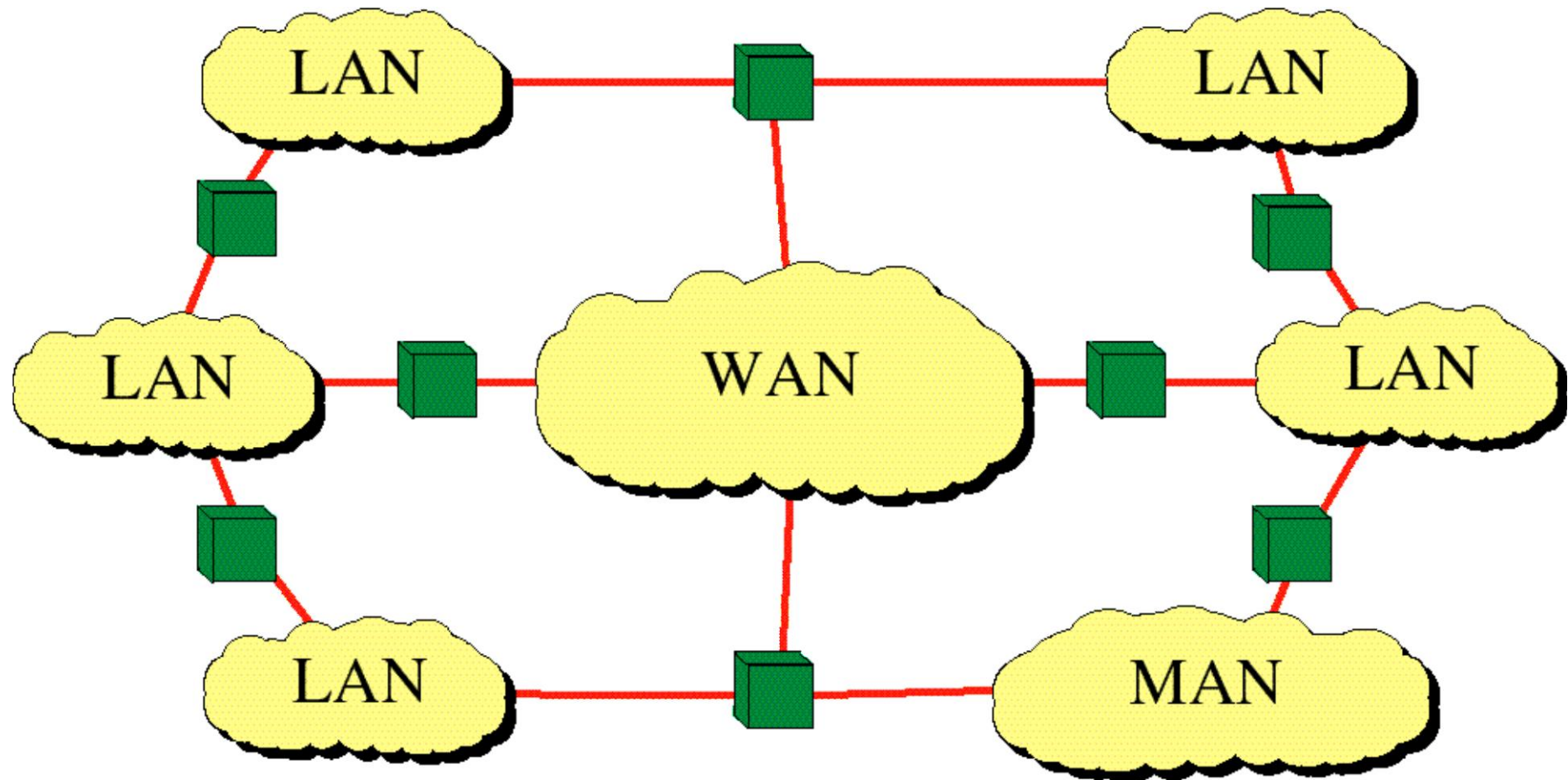
Metropolitan Area Network



Wide Area Network



Internetwork (Internet)



Question

Q: What is Transmission Mode? Explain in Detail.

Q: Explain LAN, MAN & WAN.